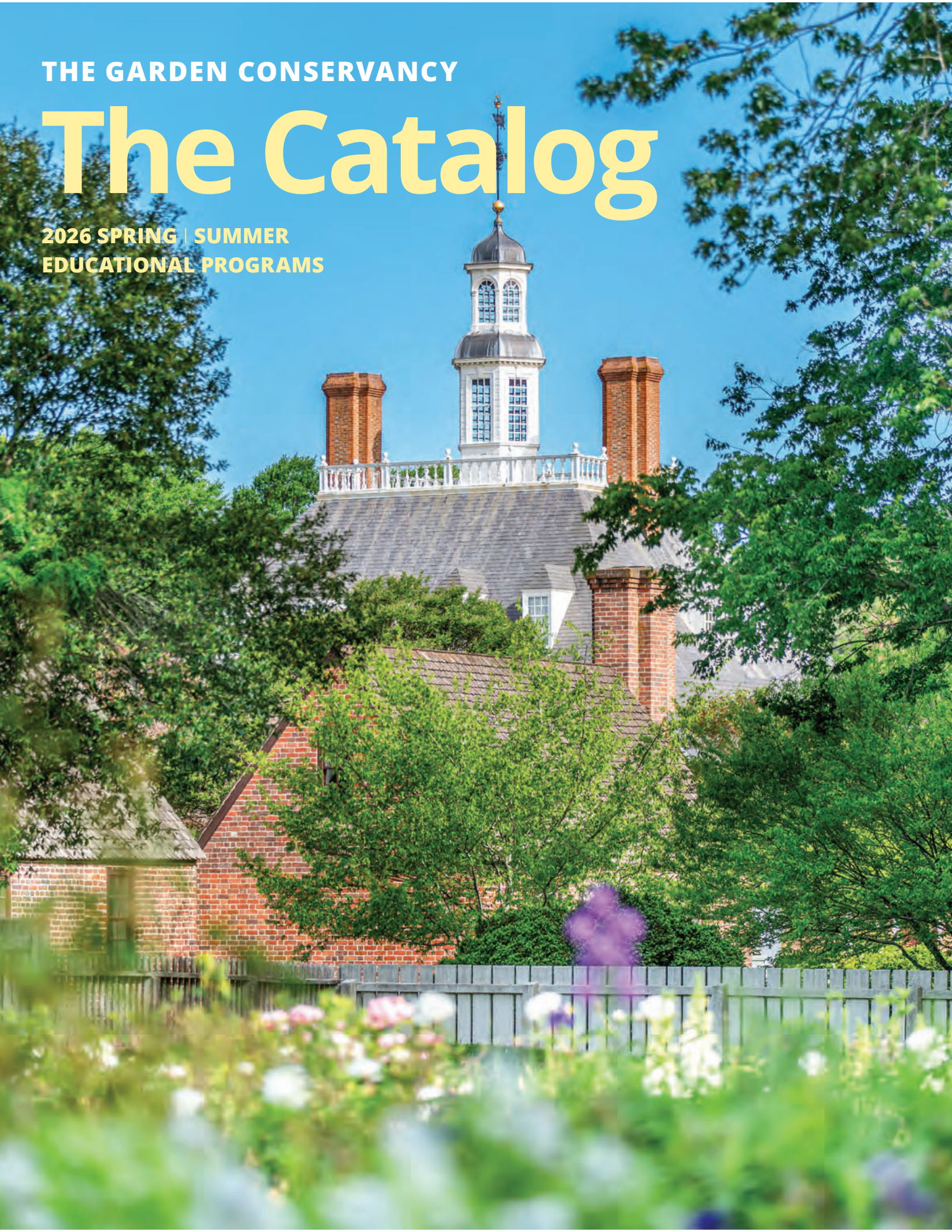


THE GARDEN CONSERVANCY

The Catalog

2026 SPRING | SUMMER
EDUCATIONAL PROGRAMS



The Garden Conservancy



OUR MISSION

The mission of the Garden Conservancy is to preserve, share, and celebrate America's gardens and diverse gardening traditions for the education and inspiration of the public.

OUR VISION

The Garden Conservancy will be the champion and steward of the vital role gardens play in America's history, culture, and quality of life.

The Garden Conservancy educational programs are made possible in part by:

The Coleman and Susan Burke
Distinguished Lecture Fund

Courtney and Terrence Daniels

The Lenhardt Education Fund

Additional support is provided by:

The Antonia Breck Fund

Michelle and Perry Griffith

John S. Troy, FASLA



Stroll Through the History and Artistry of Gardens This Season

Anniversaries are irresistible for organizations. They invite reflection, celebration, and some well-earned swagger. After marking 30 years of our Open Days program last season, we're turning our attention to a milestone that belongs to us all: the nation's semiquincentennial. America at 250 is the perfect excuse to do what we do best—spotlight the extraordinary role gardens have played in shaping the American story.

We launch the season with a public lecture by one of the country's most historically savvy landscape architects, Thomas Woltz. In "Whole Works of Art: Four Centuries in Three Gardens," presented in West Palm Beach, FL, Thomas explores a trio of historically significant landscapes to ask a timely question: What might the American garden of the future look like?

The conversation continues at Olana State Historic Site, one of Woltz's case studies, where we're delighted to host a Digging Deeper program focused on their newly completed Frederic Church Center for Art & Landscape. Additional Digging Deeper programs brim with history and inspiration, from the use of native habitats by early pioneers in Delray Beach, FL, to a 1920s Arts and Crafts-style garden in Millburn, NJ, to a reimagined Revolutionary-era garden in Darien, CT.

Preservation—always at the heart of our mission—takes center stage this spring. In Lake Forest, IL, James joins landscape architect Craig Bergmann for a tour and conversation on creative paths to stewardship, inaugurating a new class of Garden Masters programs, "A Day Out with the President." And at Colonial Williamsburg in Virginia, Garden Masters participants will explore exciting new developments in the restoration and presentation of eighteenth-century gardens.

Our virtual programs range widely across the landscape of garden history, with webinars on new books exploring the afterlife of the Lewis and Clark Expedition and the surprising power of community gardens over three centuries. History, as these conversations reveal, is not just about the past; it's a powerful tool for imagining a better future.

With that future in mind, we invite you to a virtual roundtable tackling today's increasingly confounding media landscape for garden news and information. If you're searching for trusted voices and fresh insight, don't miss this lively and practical conversation moderated by Margaret Roach.

We look forward to seeing you online and in the garden.

James Brayton Hall
President and CEO

H. Horatio Joyce, PhD
Director of Public Programs and Education





Explore Our Offerings

Be sure to check [gardenconservancy.org](https://www.gardenconservancy.org) for the most current information and latest additions to our educational offerings, including Open Days, our signature garden-visiting program.

SPRING LECTURES | THOMAS WOLTZ | PAGE 5

Thomas Woltz, one of America's most historically erudite landscape architects, highlights elements of his award-winning designs with lectures in West Palm Beach, FL, and St. Louis, MO.

VIRTUAL ROUNDTABLE | GARDEN MEDIA | PAGE 8

From Columns to Clicks: A Virtual Roundtable Discussion on Navigating the New Media Landscape

VIRTUAL PROGRAMS | BOOKS | PAGE 10

Authors share insights and inspiration during Tuesday online sessions as they introduce new books that delve into the world of gardening.

DIGGING DEEPER | PAGE 17

Digging Deeper events bring together intimate groups for unique and, in most cases, site-specific garden experiences from our Open Days program.

GARDEN MASTERS | PAGE 25

Garden Masters events are in-depth study programs in exclusive and significant landscapes, bringing garden enthusiasts together with innovative thought leaders in horticulture and design.

HOW TO REGISTER

Advance registration is required for these programs. Space is limited; sign up today!

Visit [gardenconservancy.org](https://www.gardenconservancy.org) for more detailed event descriptions and to register online. Additional programs will be added during the year.

You may also register by calling the Garden Conservancy at 845.424.6500 (Monday-Friday, 9 a.m. to 5 p.m. Eastern)



**Scan code to view
[gardenconservancy.org/programs](https://www.gardenconservancy.org/programs)**

The Gardens at 900, Lake Forest, IL. See our Garden Masters program, Saving Gardens: Creative Paths to Preservation, on page 29. Photo: Scott Shigley



Spring Lectures: Thomas L. Woltz

The Garden Conservancy is thrilled to bring the leading American landscape architect Thomas Woltz to two cities this spring for talks on different topics animating his practice.



Olana State Historic Site, Hudson, NY. Photo: Nick Hubbard



Bok Tower Gardens, Lake Wales, FL. Photo: Nick Hubbard

Whole Works of Art: Four Centuries in Three Gardens

Monday, March 16 | 2:30 p.m. to 4 p.m.

Talk at 2:30 p.m. followed by book signing at 3:30 p.m.

The Norton Museum of Art, West Palm Beach, FL

\$45 Members | \$55 General

Over the last 250 years, visionary American gardeners have broken the bounds of expectation by creating complete and immersive landscape experiences using natural landforms, water, and horticulture at scales that inspire awe and wonder. Thomas Woltz will present three American gardens spanning the 17th to 20th centuries: Middleton Place in Charleston, SC, probably America's largest Baroque garden; Olana State Historic Site, the 19th century landscape creation of painter Frederic Church in Hudson, NY; and Bok Tower Gardens, the early 20th century horticultural vision of Edward Bok, in Lake Wales, FL. Each of these gardens left an indelible mark on their century and captured a unique vision of what an American garden could be. Using drawings and photographs, Woltz will discuss his firm's work over the last fifteen years to restore and expand each of these essential American landscapes while asking the question, what will the gardens of the 21st century be?

A Feast of Edens: Nurturing the Bond Between People and Plants

Thursday, May 28 | 2 p.m. to 4 p.m.

Talk at 2 p.m. followed by reception at 3 p.m.

Missouri Botanical Garden, St. Louis, MO

\$45 Members | \$55 General

The design of botanic gardens and arboreta offers a rich experiential and educational platform for connecting people to the horticultural diversity of our planet. Thomas Woltz has spent 25 years with his team designing innovative examples of gardens that reveal specific cultural history while stewarding the ecology of place. In this talk, he will present a selection of public gardens that explain his firm's design philosophy: that every piece of land has a story to tell. Woltz will discuss the firm's designs for Mt. Cuba Center in Hockessin, DE; Bok Tower Gardens in Lake Wales, FL; the National Arboretum of New Zealand; and Citygarden in downtown St. Louis, MO. Each unique design is a portrait of place revealing specific history through horticulture. Woltz will also offer highlights of the firm's new monograph, *The Land is Full*, that presents this same philosophy in twelve recent public gardens and parks.



THOMAS L. WOLTZ, Senior Principal of Nelson Byrd Woltz Landscape Architects (NBW), leads a cross-disciplinary practice that integrates science and history to revitalize public landscapes across 30 states and twelve countries. By blending restoration ecology with cultural storytelling, Woltz's award-winning designs reveal erased histories in urban parks, post-industrial sites, and educational campuses. An alumnus of the University of Virginia with master's degrees in architecture and landscape architecture, his visionary work has earned him recognition as a *WSJ. Magazine* Design Innovator and ASLA Fellow. Currently serving as Co-Chair for The Cultural Landscape Foundation, Woltz continues to shape the sustainability of the public realm, most recently being honored with the 2025 Frederic Church Award.

Left: Citygarden, St. Louis, MO. Photo: © Hedrich Blessing 2009

How to Register

Advance registration is required for these programs. Space is limited; sign up today!

Visit gardenconservancy.org for more detailed event descriptions and to register online. Additional programs will be added during the year.

You may also register by calling The Garden Conservancy at 845.424.6500 (Monday-Friday, 9 a.m. to 5 p.m. Eastern)



Scan code to view gardenconservancy.org/programs



Virtual Programs

Expand your gardening horizons and connect with a passionate community from the comfort of your own home.



A garden antique at Broccoli Hall, Amenia, NY. Photo: Daniel Brennan

From Columns to Clicks: A Virtual Roundtable Discussion on Navigating the New Media Landscape

Thursday, July 30 | 2 p.m. Eastern

\$5 Members | \$15 General

Join the Garden Conservancy for a virtual roundtable exploring the evolving state of garden media. Our distinguished panelists and moderator will examine the forces shaping today's information ecosystem and share practical guidance on finding trusted, useful, and inspiring resources for your gardening questions.

Where can gardeners turn for reliable news and information today? What seems like a simple question has anything but a simple answer. Gardeners are more information-hungry than ever as our aesthetic sensibilities broaden, and the sources we rely on continually shift and evolve. Our questions, often driven by climate and ecology, are increasingly specific to region and context, even as many local newspapers retire longtime garden columns or disappear altogether. At the same time, other legacy media are adapting and even thriving with new niche magazines and an expanding roster of gardening titles from major book publishers.

Then there's digital sleuthing! AI-enhanced search results appear wonderfully authoritative but have been shown to hallucinate answers. And online plant databases (though invaluable) can be unwieldy, opaque, or intimidating. Blogs may be waning in popularity as Substack and social media rise, but the explosion of voices makes it harder than ever to distinguish sound advice from sponsored content. In short, garden media has reached an inflection point—and it's time to take stock.



Moderator:

MARGARET ROACH is a longtime garden writer—first for *Newsday* newspaper, then for *Martha Stewart Living* (where she became the company's EVP/Editorial Director) and the last six growing seasons for *The New York Times*. She also creates a website, podcast, and weekly newsletter called “A Way to Garden,” the title of her 1989 book that was reissued in 2019 in an all-new edition. Margaret has written several other books, including in 2013 *The Backyard Parables*. Her public-radio podcast, called *A Way to Garden*, is in its sixteenth year.

Panelists:



KEVIN CLIFF (aka @theplantpapi) is a plant enthusiast, therapist, content creator, and storyteller who explores the intersection of plants, mental health, and everyday life. Through humor, honesty, and lived experience, he reframes houseplants not just as decor but as tools for grounding, routine, and self-connection. His work invites people to slow down and find meaning in the small.



ROCHELLE GREAYER is the editor of *American Gardener*, the flagship publication of the American Horticultural Society. Rochelle is also the founder of *PITH + VIGOR* and ran an independent landscape design firm for more than 20 years. In addition to her editorial work, Greayer was the on-air gardening expert for HSN. She is the author of *Cultivating Garden Style*, a contributor to several other garden books, and the creator of widely used online courses in garden design.



REBECCA McMACKIN is an ecologically obsessed horticulturist, garden designer, and writer. She is Lead Horticulturist for the American Horticultural Society and produces the monthly newsletter and podcast *Grow Like Wild!* Previously she was Arboretum Curator at Woodlawn Cemetery in the Bronx, a Loeb Fellow at Harvard, and managed Brooklyn Bridge Park. She has written for and been featured in *Gardens Illustrated*, *The New York Times*, *The Wall Street Journal*, NPR, and PBS, and her TED talk on ecological gardening has been watched more than a million times.



STEPHEN ORR is the author of three books, including an upcoming book of essays, *The Gardener's Mindset: Connecting with Nature through Plants* (Clarkson Potter/Random House, May 2026). Previously he was the editor in chief of *Better Homes and Gardens*. He was also executive at *Condé Nast Traveler* as well as garden editor at *Martha Stewart Living, House & Garden*, and *Domino* magazines. He writes regularly for his local newspaper the *Provincetown Independent*.



After Edward Days, Bloomsbury Square, 1787, pen and grey ink, with grey wash and watercolor. Private collection. Photo: © London Metropolitan Archives (City of London)

Lost Gardens of London

Todd Longstaffe-Gowan

Tuesday, March 24 | 2 p.m. Eastern
\$5 Members | \$15 General

Our fascination with lost gardens is more than a mere pervasive wistfulness for the past or a vague longing for vanished paradise—it is often fueled by our interest in reconstructing worlds that supply us with a powerful means of making sense of the past, and a way of reading history. London gardens, often shut off from the continuum of everyday life around them, and so allowing particular scope for individual experimentation, readily encapsulated attitudes to the design and use of open spaces that now often seem eccentric and improbable.

Todd Longstaffe-Gowan’s talk will focus on and celebrate the evanescence of the metropolis’s vast and varied garden legacy, ranging from the capital’s humble allotments and defunct squares to amateur botanical gardens, princely pleasure grounds, artists’ gardens and private menageries—gardens that have either vanished or changed beyond recognition. “Lost Gardens” will seek to remind us of what a precious asset gardened greenspace is, and how it has contributed over the centuries to the quality of life and well-being of generations of inhabitants of the Metropolis.



TODD LONGSTAFFE-GOWAN is a landscape architect and historian. He is Gardens Adviser to Historic Royal Palaces (with responsibilities at five Royal Palaces in Greater London), President of the London Gardens Trust, and lecturer at New York University (London). He is the author of several books including *The Gardens and Parks at Hampton Court Palace* (2005), *The London Square* (2012), *English Garden Eccentrics* (2022), and *Lost Gardens of London* (2024).



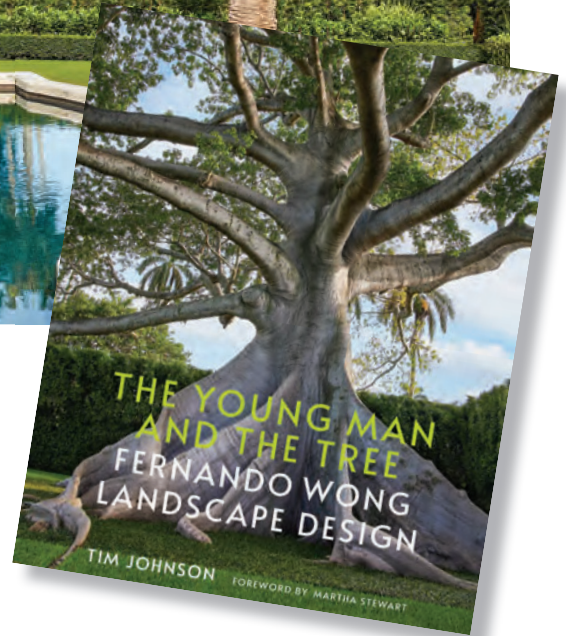
Photo: Carmel Brantley

The Young Man and the Tree: Fernando Wong Landscape Design

Tim Johnson and Fernando Wong

Tuesday, April 7 | 2 p.m. Eastern

\$5 Members | \$15 General



The Young Man and the Tree is gorgeous proof of *ELLE Decor*'s claim that Fernando Wong is "one of the most influential landscape designers in America." As the luxuriant private gardens featured in this sumptuously illustrated book reveal, Wong has become renowned for designing not only landscapes of lushly layered foliage and flowers but also elaborate garden follies, pools, pool pavilions, outdoor kitchens, fountains, sculpture gardens, and hardscapes. Trained in architecture and interior design in his native Panama, Fernando Wong turned to landscape design after moving to the United States in 2001, and along with his partner, Tim Johnson, founded Fernando Wong Outdoor Living Design in 2005. All the projects featured here are located in tropical climates, including Miami, Palm Beach, and Lyford Cay on Nassau. With a foreword by Martha Stewart and commentary by noted interior designers including David Netto, Miles Redd, and Amanda Lindroth, who decorated some of the homes for which Wong created the gardens, this book provides gardeners and garden lovers everywhere with fresh inspiration.



FERNANDO WONG has been called "one of the best landscape designers in the world" by the Chelsea Design Centre in London and "one of the most influential landscape designers in America" by *ELLE Decor*. His television series *Clipped* with Martha Stewart can be streamed on HGTV and Discovery+, and his work has been featured on *The Today Show* as well as in leading design publications worldwide.

Beyond his acclaimed residential projects, his award-winning landscapes have been showcased at the Chelsea Flower Show, multiple Four Seasons resorts, and the Lyford Cay Club. He founded his eponymous firm with his partner Tim Johnson in 2005.



TIM JOHNSON is CEO of Fernando Wong Outdoor Living Design. In addition to residential projects around the world, commercial designs include the Four Seasons Hotel at the Surf Club in Miami, the Four Seasons Resort in Palm Beach, the Four Seasons Private Residences in Fort Lauderdale, the Gasparilla Inn & Beach Club in Boca Grande, the Seminole Golf Club, the Starwood Luxury Collection

Bardo and Mansion Hotels in Savannah, the Lyford Cay Club, and a national park for the Bahamian government.



Mimulus lewisii. Photo: Heritage Flower Farm

Chasing Lewis's Monkeyflower: The Amazing Afterlife of the Lewis and Clark Expedition's Wild Plants

Betty Adelman

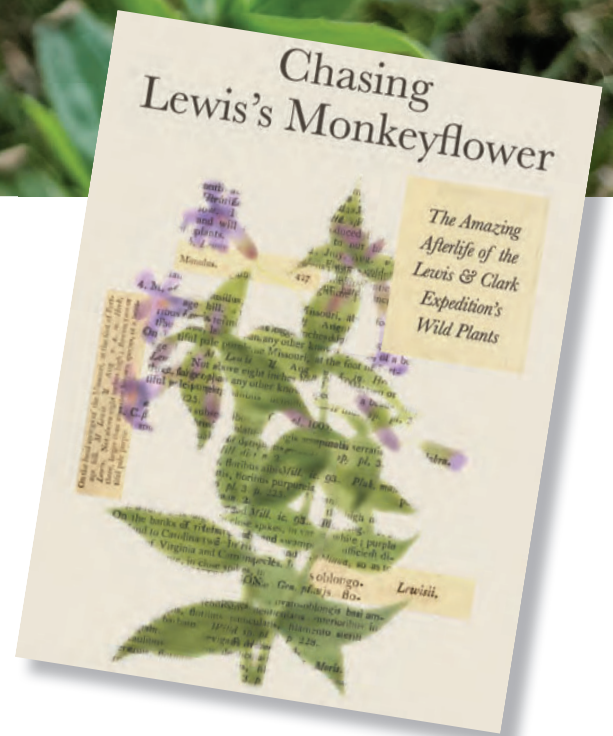
Tuesday, April 21 | 2 p.m. Eastern

\$5 Members | \$15 General

Chasing Lewis's Monkeyflower is the 200-year saga of finding, losing, and finding the wild plants collected on America's first exploration west, the Lewis and Clark Expedition.

Thomas Jefferson handpicked Meriwether Lewis to lead the expedition, gather notable specimens along the way, and then write the journals, with one volume to include science-worthy descriptions and classifications of the plants that Lewis collected and pressed to preserve. Not a botanist, Lewis needed help to write this part of the journals.

Ambition, deceit, theft, wealth, debt, alcoholism, loss, suicide, serendipity, and stubborn persistence cross the plants' paths in Philadelphia, New York, and London. This is the first work detailing the places, practices, and times of a cavalcade of people who touched the plants. It's a fascinating chronicle of an unexplored byway of the great American story.



ELIZABETH ADELMAN gardened on weekends and summer evenings while practicing law. Twenty-five years ago, she gave in and started Heritage Flower Farm, an award-winning nursery growing perennial flowers, now featured in botanic gardens, historic sites, and backyard gardens around the country. About a decade ago, a friend introduced her to the plants collected on the Lewis and Clark Expedition, and she was hooked. She spent winters researching and writing about the people, times, places, and events creating the mysteries, losses, and rediscoveries of the plant specimens across two continents and 200 years.



Photo: Myriam Gurba

Rooting the Soul

Myriam Gurba

Tuesday, May 5 | 2 p.m. Eastern
\$5 Members | \$15 General

“Rooting the Soul” will discuss a psycho-spiritual illness prominent in Latin America: *susto*. (In the West, *susto* loosely parallels post-traumatic stress disorder.) *Susto* is often treated using plant medicines and other earth-based materials. Myriam Gurba will discuss the ways that *susto* has manifested in her life and how it shaped the writing of *Poppy State: A Labyrinth of Plants and a Story of Beginnings*. She will also discuss how transforming her relationship to land and rekindling her relationship to Indigenous nations helped to repair her experience of *susto*. California native plants and animals will be central to this conversation. Native lands occupied by the settler colonial state of Mexico will also be part of this conversation. Program participants will be encouraged to engage in personal storytelling.

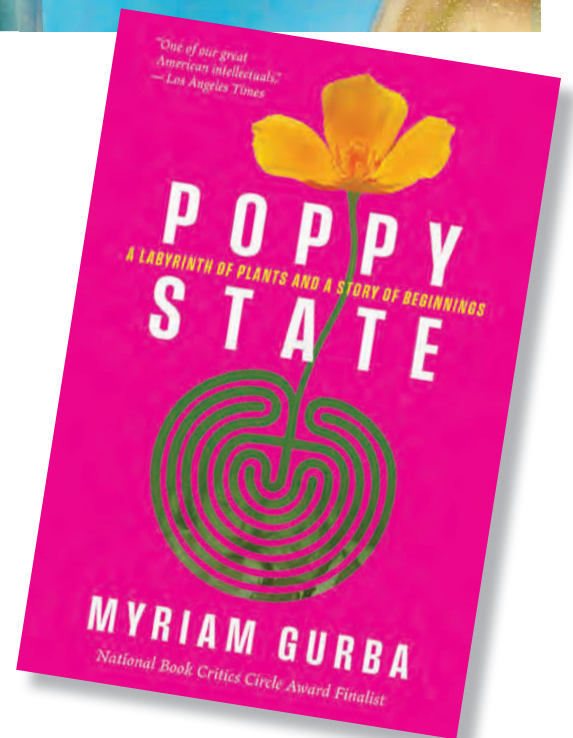


Photo: Geoff Cordner

MYRIAM GURBA is the author of several books, including *Poppy State: A Labyrinth of Plants and a Story of Beginnings*. Her writing has been published by the *New York Times*, *Los Angeles Times*, and *The Paris Review*. She is part of the movement to end gender-based violence. She enjoys coffee, dirt, and freedom.



White Garden, Sissinghurst. Photo: ©National Trust Images/Annaick Guitteny

Writing the Garden

Claire Masset

Tuesday, May 19 | 2 p.m. Eastern

\$5 Members | \$15 General

Throughout history, gardeners have been compelled to put pen to paper to capture the beauty, seasonal changes and quiet philosophy of their plots. Claire Masset's new book, *Garden Voices: A Year of Gardeners' Writing*, brings together some of the best of these musings—through letters, diary entries, and articles—in a unique anthology organized around the calendar year. Readers are transported across time and place to enjoy rare horticultural glimpses from both world-famous gardeners and lesser-known—though no less inspiring—garden writers.

Claire Masset will explore a selection of these voices, from artists Claude Monet, Camille Pissarro and Van Gogh to writer-gardeners Celia Thaxter, Derek Jarman and Vita Sackville-West. Accompanied by carefully selected paintings and photographs, the talk will offer insights into their lives, thoughts, and achievements, revealing gardens not only as places of beauty, but as powerful sources of artistic and personal expression.



CLAIRE MASSET is a Franco-British author, journalist, and publisher. Her previous books include the best-selling *Secret Gardens*, *Cottage Gardens*, and *Buckingham Palace: A Royal Garden*. She is also the author of *Why We Garden*, which offers unique insights into our universal motives for garden-making, and draws on the wisdom and experience of artists and writers such as Claude Monet, George Orwell, William Morris, Vita Sackville-West, and Virginia Woolf. Her journalism has appeared in *Country Life*, *Homes & Antiques*, *Gardens Illustrated*, *Art Quarterly*, and *The English Garden*. Born and raised in France, she now lives in rural Oxfordshire.



Photo: Caitlin Atkinson

Designing the Lush Dry Garden

Cricket Riley and Alice Kitajima

Tuesday, June 30 | 2 p.m. Eastern
 \$5 Members | \$15 General

Cricket Riley will share the inspiration behind the book *Designing the Lush Dry Garden* and discuss how personal experience, place, and climate shape the way we design and experience our landscapes. She will explore what it means to create gardens that are vibrant, resilient in the face of a changing climate, and expressive of individual values and aesthetics. The talk will highlight influences from the Ruth Bancroft Garden as well as practical design strategies and thoughtful plant choices that balance beauty with sustainability, offering attendees approachable ideas they can adapt to their own spaces. Cricket will also touch on how observation, experimentation, and seasonal change inform successful garden design over time. The presentation will conclude with an interactive Q&A, inviting audience members to ask questions and explore how the concepts, tools, and inspiration from the book can be applied to their own unique landscapes and gardening goals.



CRICKET RILEY is co-owner of Lush Dry Gardens, a landscape design firm specializing in low-water garden design, and worked at the Ruth Bancroft Garden in Walnut Creek, CA, from 2017 to 2025. During her tenure she held multiple roles, including founding and serving as Director of the Design Services department. She was the primary instructor for the Dry Garden Design Certificate Program, which she co-created with Alice Kitajima in 2020.



ALICE KITAJIMA's deep connection to gardens and landscape design began early, inspired by her father, who immigrated to Los Angeles to design and install Japanese-style gardens. After completing her forestry and music studies at the University of California, Berkeley, she worked at botanical gardens and arboreta across the United States. As Program Director at the Ruth Bancroft Garden, she led the education department with a passion for helping people build meaningful, lasting connections with plants.



A thriving allotment garden in a bomb crater. London, 1943.

Tiny Gardens Everywhere: The Past, Present, and Future of the Self-Provisioning City

Kate Brown

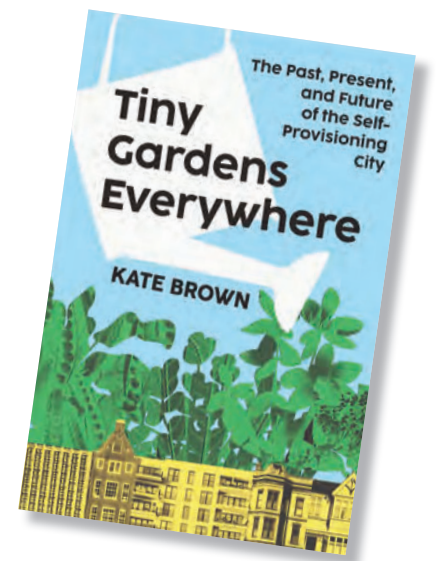
Tuesday, July 14 | 2 p.m. Eastern

\$5 Members | \$15 General

In the heart of European and American cities lies an overlooked yet vibrant space for resilience, ingenuity and magic: the garden. Part history, part reportage, part manifesto, *Tiny Gardens Everywhere: The Past, Present, and Future of the Self-Provisioning City* follows the 300-year history of urban gardening—from feudal England to the Paris Commune, to Berlin’s green shantytowns, to contemporary Amsterdam, Chicago, and beyond.

Throughout, acclaimed MIT historian Kate Brown weaves in her own gardening experience, exploring the political and the practical while painting a picture of the necessity of self-provisioning in an increasingly chaotic world. Ever since wage labor in cities replaced self-provisioning in the countryside, gardeners have reclaimed lost commons on urban lots. They composted garbage into topsoil, creating the most fertile agriculture in recorded human history, without the use of fossil fuels.

The ecological diversity they fostered made room for human difference and built prosperity, too: In Nazi Berlin, working class gardeners harbored dissidents and Jews; in Washington, DC, Black southern migrants built communities around gardens and orchards, the produce funding homeownership. The Soviet superpower survived so long only because of its urban gardens. In *Tiny Gardens Everywhere*, Brown creates a mesmerizing hybrid of past and present, archive and experience, showing how down-to-earth gardeners, through resourcefulness, intuition, and inherited methods, can reap abundant, local, diverse and organic harvests while fostering mutual aid, community, and political engagement.



KATE BROWN is Distinguished Professor in the History of Science at MIT and author of four previous prize-winning books, including *A Manual for Survival*, an NBCC Award finalist. She currently plants her gardens in Cambridge, MA, and in Vermont.

Digging Deeper

A scenic view of a lush garden with string lights and a mountain background. The foreground is filled with various plants, including tall dandelions, purple flowers, and green foliage. String lights are strung across the garden, supported by black poles. In the background, a large, green mountain range is visible under a cloudy sky.

Go beyond the blooms and delve into the fascinating world of gardening with informative talks and hands-on workshops covering a wide range of topics.

SATURDAY, MARCH 7

Delray Beach, FL

Exploring Florida Native Habitats, Delray Beach Historical Society Educational Heritage Garden

Visitors will enjoy meandering garden paths around our one-acre, Florida-native habitats in Delray Beach. The tour is hosted by Florida native garden experts including Garden Chairperson Connie Lyons, discussing ethnobotany, pollinators, sustainability, habitat restoration, and endangered and invasive species. Three historic cottages and exhibits will be open. Guests will learn about early pioneer environmental resources and how Delray Beach transitioned from an agricultural town to a booming tourism destination. *2 p.m. \$30 Members, \$40 General*

SATURDAY, APRIL 18

Walnut Creek, CA

Designing In Situ: Responding to Micro Climate and Architecture, Las Palmas del Norte

Join a tour with Cricket Riley, Co-founder and Principal, Lush Dry Gardens. Two main factors influenced the design of this garden: the many micro climates present and the distinct architecture of the home. The house is an A. Quincy Jones designed Eichler home built in 1955 as part of the WWII housing boom. These houses are known for their modern architecture, including floor-to-ceiling windows that face the garden in the rear of the home. The lot is a double lot, quite large for the suburban neighborhood (0.42 acres). There are many mature trees on the property as well as expanses exposed to all-day sun. *10 a.m. \$30 Members, \$40 General*

FRIDAY, MAY 1

Boston, MA

May Day Walk with Jennifer Nawada from *This Old House*, Arnold Arboretum of Harvard University

TV personality and garden expert Jennifer Nawada will discuss and view the springtime plants, bushes, and trees at the Arboretum with ways to incorporate them into your own garden. She will be joined by experts from the Arboretum to give the history of the plants and Christine Tuttle of Christine Tuttle Design (the designer on *This Old House*) to comment on current trends in home gardens in Greater Boston. *10 a.m. \$30 Members, \$40 General*

SATURDAY, MAY 2

South Kingstown, RI

Notable Plants of Kinney Azalea Gardens

Kinney Azalea Gardens showcases over 500 azalea and rhododendron cultivars, more than 100 unique woody plants and trees, and a vibrant array of native wildflowers. Enjoy a guided tour led by Executive Director Julie Christina and our horticultural team, and stroll our 16-acre trails, where color and form come together to create a breathtaking garden landscape. *10 a.m. \$30 Members, \$40 General*

South Kingstown, RI

Unique Plants of the URI Botanical Gardens

Join Benjamin Robbins, Greenhouse Manager, for an in-depth tour of some of the more unique plants featured in the URI Botanical Gardens. We will explore the collection from a historical and horticultural perspective, and learn identification techniques that can be used

to identify some of the common native plants that are found throughout New England gardens and landscapes. *2 p.m. \$30 Members, \$40 General*

SATURDAY, MAY 9

Pound Ridge, NY

A Rose is Never Just a Rose—Plants in Community, James and Ellen Best's Sara Stein Garden

Mathew McDowell is a horticulturist and naturalist who specializes in regional native plants, invasive species management, and designing planted spaces attractive to humans and wildlife. In this walking tour, we'll be exploring the unique adaptations of plants found in the Sara Stein Garden, many of which are found growing wild in New York State. What is their evolutionary history? How do they relate with other plants and animals in this shared habitat? How has this plant been used in cultures around the world? Perhaps learning how a plant reproduces will surprise you! Whether you're a plant professional or new to the native plant world, you'll be amazed with the exciting interrelationship of plants. *10 a.m. \$30 Members, \$40 General*

SATURDAY, MAY 16

Garrison, NY

Power of Place at Manitoga: Garden and Home of Russel Wright

This Digging Deeper event is presented in partnership with Manitoga | The Russel Wright Design Center. Landscape Collection and Conservation staff lead an exploration of the "power of place" at Manitoga, the woodland garden and Mid-century Modern home of pioneering



Visit Las Palmas del Norte, Walnut Creek, CA, Saturday, April 18. Photo: Caitlin Atkinson

industrial designer Russel Wright and his wife, Mary Wright. In its concept, design, and management, Manitoga unites science, culture, and nature with an ecology that is both human and spiritual. By employing the language of the forest to rehabilitate disturbed land, Wright demonstrated a sense of social responsibility and environmental sensitivity that continues to be relevant for both at-home and professional garden designers. *10 a.m. and 3 p.m. \$30 Members, \$40 General*

.....
SATURDAY, MAY 23

Germantown, NY

Alice Livingston and the Making of Clermont's Historic Gardens

During her time in Italy, Alice Delafield Clarkson Livingston (1872-1964) fell in love with the beauty of classical garden design. When she returned home to Clermont, she blended those Italian influences with the charm and natural grace of English-style gardens. In the 1930s, Alice created the Walled, Wilderness, and Cutting Gardens, each with its own character and story to tell. Join Friends of Clermont Executive Director Randy Tryon at the Formal Gardens at Clermont State Historic Site, as we explore how Alice's creativity shaped the timeless landscape we enjoy today. *10 a.m. \$30 Members, \$40 General*

Hudson, NY

Building with Landscape Design in Mind, Olana State Historic Site

Over 40 years, the artist Frederic Church designed Olana's landscape. In 2024, a landmark new visitor center designed by Architecture Research Office and Nelson Byrd Woltz Landscape Architects opened, offering a holistic understanding of Church's large-scale landscape design. With native plantings, cross-laminated timber construction, and bird-friendly glass, the building works in concert with Olana's living landscape and welcomes visitors to Olana's 250 acres, including a man-made lake, historic carriage roads, and breathtaking views. Join Carolyn Keogh and The Olana Partnership to learn more about the Frederic Church Center for Art & Landscape's conception and future. *3 p.m. \$30 Members, \$40 General*

.....
SUNDAY, MAY 31

New Canaan, CT

Gardening with Ferns: Fern Fever, And Haig's Garden

Ferns are a fascinating oddity of the gardening world with unique means of reproduction, a genetic mutation that allows them to prosper in the shade, and a beauty that is undiminished by having no flowers.



Visit May Place, Gardens of Bill and Eileen Elliott, in Hancock, NH, Sunday, June 7. Photo: the Garden Host

There are approximately 1,000 ferns that are hardy in North America, and they vary widely, from ferns with simple leaves to ferns with unfathomably intricate geometric designs. In their program Garden Hosts Ann and Haig Brown explore the history of ferns, their life cycle, their enormous variety, their use as ground covers and as specimens, and how they are a relatively easy plant to source, grow, and transplant. *10 a.m. \$30 Members, \$40 General*

.....
SATURDAY, JUNE 6

Philadelphia, PA

Remaking the Nicholson Church Lane Community Garden

Visit this 50-year-old food-producing garden in the historic Germantown section of Philadelphia with Neighborhood Gardens Trust and Apiary Studio. Permanently preserved by the Neighborhood Gardens Trust, this shared growing space underwent a major renovation in 2025, designed and constructed by the landscape practice Apiary Studio. This project focused on retaining the original character of the site and its generous plot dimensions while addressing the challenges of assuring safe accessibility on terraced ground with steep grade changes. Learn about the collaborative effort with the gardeners to transform this neighborhood anchor to improve its infrastructure, quality of harvest, and community engagement capacity. *10 a.m. \$30 Members, \$40 General*

Pacifica, CA

Sustainable Gardening: How To Get Started, Pacifica Collector's Garden

Is it ethical to have an ornamental garden in our climate? And if so, how can we create a lush landscape using gardening practices that have the least impact on our environment? How can we make realistic steps in the right direction, without falling on our faces and ending up with a garden that feels self-righteous and boring? And how can we visit the plant nursery and avoid coming home with plants that don't support our vision? Join Annie Shaw, Owner, Xeric Oasis LLC, for tips and tricks from a longtime plant hoarder. *2 p.m. \$30 Members, \$40 General*

.....
SUNDAY, JUNE 7

Hancock, NH

Gardening and Living Off the Grid for Forty-Five Years, May Place-Gardens of Bill and Eileen Elliott

During a walk through gardens and woodland to their house, Garden Hosts Bill and Eileen Elliott will focus on interrelated aspects of gardening and living while attempting to minimize environmental impacts and live happily with limits. Topics include: vegetable garden, herb garden, ornamentals, composting, water pumping and storage, small photovoltaic system, firewood preparation and use, composting toilet, household heating, cooking and hot water, food storage, coping with climate change and aging. *4 p.m. \$30 Members, \$40 General*

FRIDAY, JUNE 12

Charlotte, NC

Legacy Iris and Daylily: A Deeper Look at the Original Iris and Daylily Growing at the Elizabeth Lawrence Garden

This event is presented in partnership with Wing Haven. Join us as Garden Curator Michael Sheek discusses the current *Iris* and *Hemerocallis* collection growing at the Elizabeth Lawrence House & Garden. All the species and cultivars of both plant collections that will be discussed were originally planted by Elizabeth Lawrence. Additionally, during this program, Gardener Nora Carothers will discuss the garden allies, such as beneficial animals, insects, arachnids, and bugs that help the Wing Haven garden team maintain the balance of the Elizabeth Lawrence Garden ecosystem. The program will conclude with a garden stroll of the Elizabeth Lawrence House & Garden led by Michael and Nora. 10 a.m. \$30 Members, \$40 General

SATURDAY, JUNE 13

Denver, CO

A Laboratory of Microclimate, Panayoti Kelaidis Quince Garden

Join Panayoti Kelaidis, Garden Host and Regional Ambassador, in this Digging Deeper event. Mid-June is traditionally the peak of floral excess in Quince garden, but this is more than just a lot of color. Quince was designed to grow a great diversity of plants (in the thousands!) but to site them in their proper context and ultimately achieve a harmonious work of art. You can be the judge if it succeeds. You will find woodland beds full of rare ferns and shade-loving



Join Wendy Hollender in her garden and studio in Accord, NY, Saturday, June 20.

Photo: Steve Bernstein

wildflowers, but also a large ridge full of dozens of kinds of imposing cacti, yucca and agaves. "Right plant, right spot" is our motto! 4 p.m. \$30 Members, \$40 General

Amenia, NY

Confronting Beech Blights Through Soil Health, Wethersfield Estate & Garden

Wethersfield, set within a 1,000-acre historic landscape, is renowned for its elegant mansion, conservation farm, and Italian Renaissance-style garden. The garden's defining feature is its remarkable collection of beech trees, now facing serious threats from beech leaf disease and the stresses of a warming climate. Join Head Gardener Jeff Lynch for an in-depth look at current research on the disease and the estate's response. This Digging Deeper program with the Wethersfield Foundation highlights Wethersfield's evolving strategies to restore and protect beech trees, emphasizing soil health as the foundation for resilience and showcasing successful practices from soil building to targeted care. 10 a.m. \$30 Members, \$40 General

SATURDAY, JUNE 20

Accord, NY

The Album of Plant Families: An Illustrated Exploration, Hollengold Farm

Join Wendy Hollender, botanical Illustrator, author, and educator, in her garden and studio to get a behind-the-scenes look at the creation of her new book, *The Album of Plant Families*. She will show her process for exploring plants by family in the garden and studio. Walk around the garden finding plants that can be gathered and organized by family to see firsthand what makes plants part of a family. Then get a tour of Wendy's studio to see the techniques and art supplies she uses to create detailed botanical paintings. Her new book will be available for purchase. 4 p.m. \$30 Members, \$40 General

Saugerties, NY

Restoration Plantings in Place of Invasives, Spiral House Park

Lorien McCabe and Wren Waddington of Spiral House Park have been blessed with a beautiful ecosystem. They also have some challenging invasive species to contend with. First, their gardening team began to remove these plants from the garden beds and trails to replace them with native alternatives. Since 2025, volunteers have joined in to help along the trails to repeat the same process. Please come and see the results, learn their methods, and celebrate the many native or beneficial alternatives to common invasive plants. This program starts with a short lecture; then a guided tour of the transforming gardens and trails. 10 a.m. \$30 Members, \$40 General

FRIDAY, JUNE 26

Detroit, MI

Oudolf Garden Native Meadows Exploration, Oudolf Garden Detroit

Join Meredith Simpson and Richard Thomas for a guided plant walk and learning experience in the Native Meadows at Oudolf Garden Detroit—a unique lakeplain prairie habitat. The meadows were planted two years ago to rehabilitate the areas adjacent to Lake Tacoma with flowering plants, sedges, and rushes well-suited to the terrain. And for those who want to volunteer in a Piet Oudolf public garden, we'll have an opportunity to plant native plant plugs together. Enjoy strolling the gardens and learning with our experts, and capture photography during the golden hour of early evening. 4 p.m. \$30 Members, \$40 General

SATURDAY, JUNE 27

Boulder, CO

Natives and Pollinators for a Dry Western Garden, Harlequin's Gardens

This talk and tour will lead participants through a mostly natives pollinator garden and then through a well-established native shrubs garden. Both of these gardens demonstrate plants well adapted to drier Western conditions. Mikl Brawner, Owner of Harlequin's Gardens, will identify the plants and share interesting facts about them. Some of these plants are 35 years old. They all represent many years of selection for resiliency in Front Range gardening conditions. They provide insights into the potential for gardening under climate change stresses of wind, drought, and heat, and provide an example of a Western aesthetic. Mikl is co-owner of Harlequin's Gardens sustainable nursery, with a 33-year history. 12 p.m. \$30 Members, \$40 General

York, ME

Cultivating Creativity: An Artist's Garden at Surf Point, Wild Knoll Foundation Garden

This Digging Deeper is presented in partnership with Surf Point. Wild Knoll Foundation Garden is a living artwork planted on the footprint of the former home of writer May Sarton, who kept the tending of her gardens central to her creative life, as chronicled in *The House by the Sea*. Visual Artist Carly Glovinski created a new garden based on its original architectural drawings, with each "room" featuring a unique color scheme. The property where the garden grows is home to Surf Point, a nationally renowned artist residency. Carly will share the story of creating and tending the garden, and how it has become a site for connection and a creative incubator. 10 a.m. \$30 Members, \$40 General



Visit the Native Meadows at Oudolf Garden Detroit on Friday, June 26. Photo: Oudolf Garden Detroit

Millburn, NJ
Historic Garden and Cascade Restoration Tour, Greenwood Gardens
 Enjoy a one-and-a-half hour guided walking tour of Greenwood's historic garden, highlighting the history, landscape, horticulture, and architecture of this 1920s Arts and Crafts-style garden. This century-old property is graced by Italianate gardens, terraces, stately fountains, winding moss-covered paths, iconic follies, whimsical ornaments, romantic grottoes, majestic allées of London plane and spruce trees, and interactive wildlife at the barnyard. The tour with Greenwood Gardens staff includes an in-depth look at the recent 110-year-old Cascade restoration project. Cookies and iced tea will be served at the end of the tour. *2 p.m. \$30 Members, \$40 General*

Montclair, NJ
Insight into a Landscape Transformation from Start to Finish, A Private Garden
 A behind-the-curtain look at how Evan Ralph, President of Back to Nature, approaches a landscape design project. The process begins with a conversation to understand what matters most to the client, then builds layers of form, shape, and intention into a cohesive design. This sneak peek walks through the step-by-step process, reveals original intentions and unexpected challenges,

and showcases the finished work. The final landscape combines construction details, concept and design drawings, and imagery to transform a space into a sanctuary for clients to enjoy year after year. *10 a.m. \$30 Members, \$40 General*

SUNDAY, JUNE 28
Katonah, NY
The Rose Through Time, Culture and Trials for Sustainability, Lasdon Public Gardens & Veterans Memorial
 This Digging Deeper event is presented in partnership with Lasdon Public Gardens. Discover the extraordinary ways the rose has been depicted through time and across cultures, both within and beyond the garden, through *The Rose Book* (Phaidon, 2025). Join co-author Kristine Paulus and Jessica Schuler, Director of Lasdon Public Gardens, for a presentation that highlights the collection of more than 200 images that celebrate the iconic flower with images as diverse as the plant's own endless varieties—botanical illustrations to fashion design, fragrance to film, fine art to photography. Visit the American Rose Trials for Sustainability trial beds, where roses are evaluated for disease and pest resistance, flowering, foliage, plant form, and growth habit, in a truly "no spray" environment. *10 a.m. \$30 Members, \$40 General*

SATURDAY, JULY 11
East Lyme, CT
Take a Walk on the Wild Side: Tour a Pollinator Meadow, The 4 Church Lane Meadow
 Join a tour with Marjorie Meekhoff of Pollinator Pathway East Lyme, Inc. This two-acre meadow was seeded in December of 2020 with a calculation of 40 to 60 seeds per square foot of native forbs and grasses. It has grown into a vibrant ecosystem that provides food, habitat, and reproduction opportunities for insects and wildlife. On the tour, we'll discuss site preparations, maintenance routines, and techniques we learned over the past five years, including the identification and removal of invasive plant species. Bring your camera! Dragonflies will do a fly-by, butterflies are photogenic, and bumblebees ignore us but are so cute. *12 p.m. \$30 Members, \$40 General*

Eolia, MO
Designing the Prairie, David Orthwein Garden
 Learn about how the prairie at David Orthwein's garden was designed. Orthwein will explain his design philosophies and inspiration. Aaron Floden, Missouri Botanical Garden Botanist, will discuss the Botanical Survey he conducted. And join us for the prairie walk (Aaron is an avid gardener as well as botanist!). Monica and Simon Barker will lead the gardeners' tour of the garden and prairie. *4 p.m. \$30 Members, \$40 General*

SATURDAY, JULY 18
Darien, CT
250 Years of History at the Mather Homestead, The Mather Homestead
 This Digging Deeper event with Samantha Lane Gault and Andrea Huntington is presented in partnership with the Mather Homestead. Come celebrate America250 at the Mather Homestead's 1778 House, Darien's only registered national historic landmark! Home to six generations of Mathers, the property reflects the history of the family, the region, and the country. It transitioned from a 100-acre self-sustaining farm owned by Deacon Joseph Mather to a post-industrial summer estate with manicured gardens owned by industrialist, conservationist, and the first Director of the National Park Service, Stephen Mather, to the family home of one of Connecticut's first female architects, Bertha Mather. The home was transferred to the newly created Mather Homestead Foundation in 2017 to be preserved as a museum dedicated to historic education. Since that time, the Foundation has restored the gardens, and the entire property has been beautified. Take a step back in time on this beautiful property on Darien's "four corners" where history was made. *10 a.m. \$30 Members, \$40 General*

SATURDAY, JULY 25

Millbrook, NY

A Celebration of Plants, Village Garden

Join Garden Host Denise Dyko: "I grow plants in all their diversity as a way to experience them: learning about them, enjoying their varying characteristics, seeing how they complement each other. It is a small property but a lot of plants, from groundcovers to trees, giving the garden an exuberant feel. My goal is that each plant fits its space while also playing a role in a larger composition with neighboring plants. They are planted (and often transplanted) in mixed communities, not as a collection. It is the diversity of the plants and their arrangement that visitors most enjoy and that led to this Digging Deeper seminar. I have been gardening in this space for 50 years." *10 a.m. and 2 p.m.*
\$30 Members, \$40 General

Hunter, NY

An American Potager, The Garden at Scribner's Catskill Lodge

The Scribner Garden is a complex combination of vegetables, flowers, herbs, and brambles. It not only provides produce for two kitchens but hosts special events and is an inspiration for hotel guests who find it entertaining and an educational experience as well. Garden Host Andrew Koehn has been its creator and master since 2018. Participants will be introduced to the concept of mixing all these plant groups together to create a community that nourishes body and soul. *10 a.m.*
\$30 Members, \$40 General

SATURDAY, JULY 25 AND
SUNDAY, JULY 26

Brookfield, WI

Tips and Tricks for Designing or Tuning Up Your Perennial Garden, An Unexpected Oasis in Brookfield

Garden Host Jeff Trader, a Master Gardener, has presented at PBS Wisconsin's Garden & Landscape Expo, adult education classes at Greendale and Franklin high schools, and garden clubs and library groups. He will share the fruits of his over 20 years of gardening experience in Brookfield. He has created 10 themed gardens incorporating perennials, native plants, annuals, art pieces, and water features. After an initial presentation with handouts, which you will also receive from the Garden Conservancy via email after the presentation, Jeff will lead you around the garden and show how he has put his tips and tricks into practice. *4 p.m.*
\$30 Members, \$40 General



Visit An Unexpected Oasis in Brookfield, WI, July 25 or July 26. Photo: Suzanne R. Stone Photography

Learn More

Membership

Your Garden Conservancy membership helps advance our educational programs and preservation work, while connecting you to all we do through benefits including complimentary and discounted admissions to Open Days or Virtual Talks. Visit gardenconservancy.org/memberships or call 845.424.6500.

Society of Fellows

This committed group of garden enthusiasts, supporters, and philanthropists helps advance our work and programs. Fellows are afforded all the benefits of our general membership program plus more, including invitations to exclusive garden-study tours. Visit gardenconservancy.org/joinfellows or call 845.424.6500.

Preservation

Since 1989, the Garden Conservancy has contributed to the preservation of more than 100 gardens. The gardens we partner with, from the smallest to the largest, express the artistic spirits of their creators and showcase the broad diversity of garden history and styles found in North America. Visit gardenconservancy.org/preservation.

Garden Futures Grants

The Garden Conservancy awards these grants to small public gardens and other nonprofit organizations making a significant impact in their communities through garden-based programming or by contributing to the study and preservation of garden history. Visit gardenconservancy.org/grants or email gardenfutures@gardenconservancy.org.

How to Register

Advance registration is required for these programs. Space is limited; sign up today!

Visit gardenconservancy.org for more detailed event descriptions and to register online. Additional programs will be added during the year.

You may also register by calling The Garden Conservancy at 845.424.6500 (Monday-Friday, 9 a.m. to 5 p.m. Eastern)



Scan code to view gardenconservancy.org/programs



Garden Masters

Explore the philosophy
behind creating a garden,
design theory, and the rich tapestry
of global gardening traditions.



Photo: The Colonial Williamsburg Foundation

Colonial Williamsburg's Revived Gardens

Jack Gary

Friday, May 1

10 a.m. to 4 p.m.

Colonial Williamsburg
Williamsburg, VA

\$320 Members | \$350 General

It's an exceptional time for gardening at Colonial Williamsburg. Although gardens have always been key to America's largest outdoor history museum, they're now moving to the fore of public interpretation thanks to two exciting projects. Spend the day with Colonial Williamsburg's Associate Vice President of Historic Resources Jack Gary learning about the archaeological excavation of the Custis Garden, a magnificent Baroque style garden from the eighteenth century, and the restoration of the iconic Colonial Revival Governor's Palace Gardens. Guests will also tour the new Campbell Archeology Center and the John D. Rockefeller Jr. Library to view archival materials relating to the gardens, including original design drawings by Arthur Shurcliff for the Governor's Palace Gardens. The program includes lunch at Colonial Williamsburg.



Photo: Barrett Doherty

Central Park's Transformed North End

Friday, May 15
10 a.m. to 12:30 p.m.

New York, NY

\$150 Member | \$175 General

Explore two recently completed developments at the north end of Central Park—the Conservatory Garden, and the green roof of the Davis Center. The program will be led by senior Central Park Conservancy staff involved in the design and implementation of each project. It will start at the Conservatory Garden, where guests will learn about the fully comprehensive restoration, including fountain modernization and the restoration of historic ornamental ironwork. The group will then walk to the Davis Center to hear about the transformation of the pool and rink at the Harlem Meer into a site of expanded scenic landscapes and nature-based—as well as active—recreation.



Charleston Classic and Contemporary Garden: Garden Visit and House Tour

Ben Lenhardt

Saturday, June 6
5 p.m. to 7 p.m.

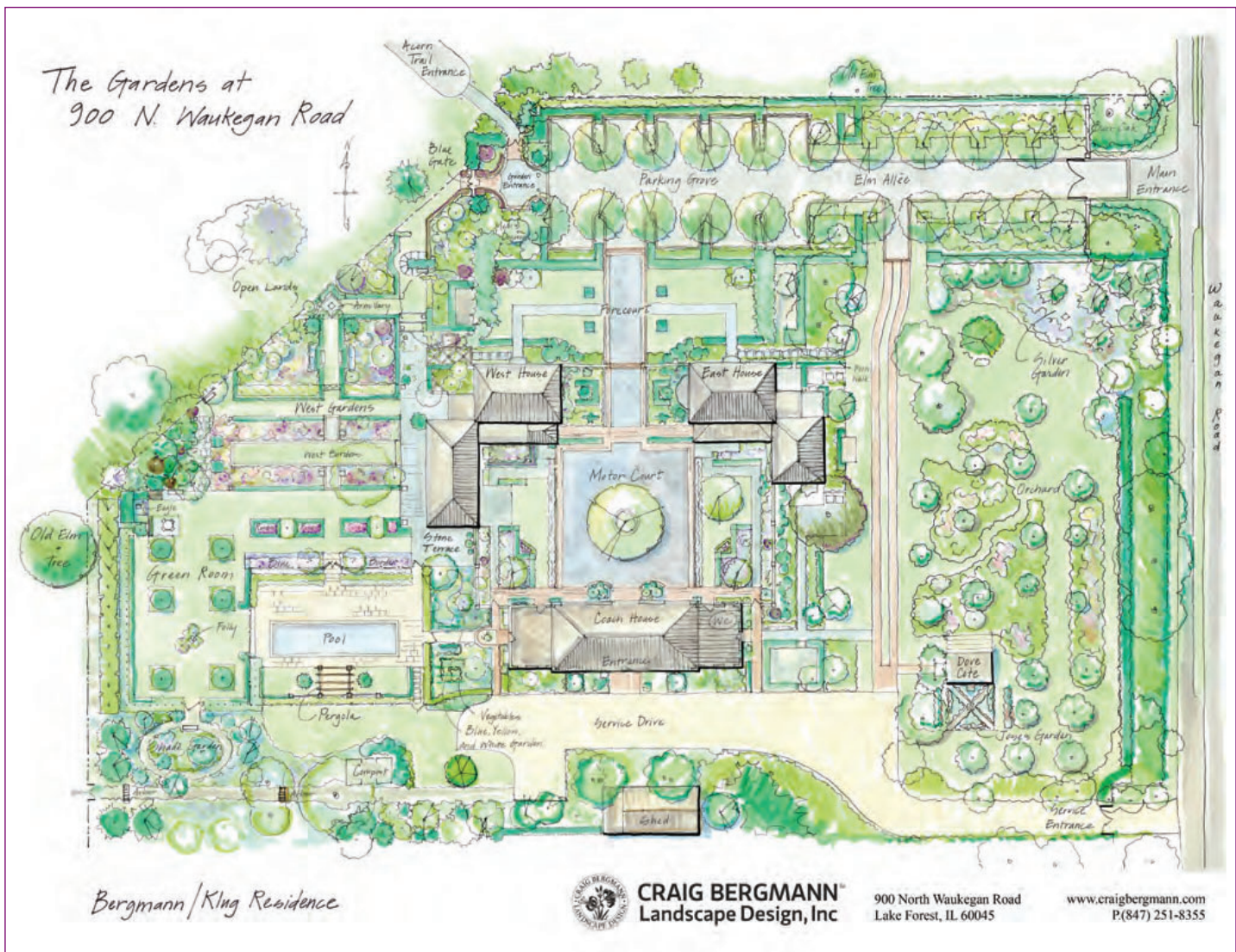
George Mathews House, Circa 1743
Charleston, SC

\$110 Members | \$130 General

Join Ben Lenhardt, Chairman Emeritus, Garden Conservancy, in Charleston, SC, for a late afternoon discussion of his renowned garden and its newest addition, a gravel garden. Wine and hors d'oeuvres will be served and visitors will have the opportunity to also tour the public rooms of his 1743 Georgian house.

Lenhardt's garden is a series of four garden rooms varying in size. He designed the first three rooms to be compatible with the early Charleston architecture and southern climate. These rooms consist of 'Kingsville' and 'Wintergreen' boxwood parterres, variegated Asiatic jasmine trimmed in knot garden style, an espaliered magnolia, and a potato vine and cascading Lady Banks rose. Through a podocarpus hedge is the fourth garden room, a newly installed gravel garden. This sustainable garden, surrounded by old stucco walls, contains anchor plantings of boxwood, pittosporum, and holly among aloes, agaves, and perennials.

An inspired merging of classical and contemporary styles, Lenhardt's garden was named one of the "World's Most Beautiful Gardens in 2023" by *Veranda* magazine and has been published in books and national magazines.



**Saving Gardens:
Creative Paths to
Preservation**
A Day Out with the President

Craig Bergmann
James Brayton Hall

Sunday, July 19
10 a.m. to 12 p.m.

The Gardens at 900
Lake Forest, IL

\$70 Members | \$90 General

What's the most critical resource for saving a garden? Oftentimes it's money. Join Garden Conservancy President & CEO James Hall and renowned landscape architect Craig Bergmann for coffee, pastries, and an exclusive tour of The Gardens at 900, Craig's longtime showroom, office, and residence in Lake Forest, IL. This historic estate—designed over a century ago by architect David Adler for A. Watson and Elsa Armour—provides a compelling setting for a conversation about what it truly means to preserve a garden, and the varied approaches to funding that work. After years of neglect, the property was restored through an innovative financial model devised by Craig and his partner, Paul Klug, which combined home and office uses to make preservation possible.



The Garden
Conservancy

PO Box 608 | Garrison, NY 10524
gardenconservancy.org

NON-PROFIT
US Postage
PAID
Brockton, MA
Permit No. 402

The Catalog

2026 Spring | Summer
Educational Programs

Below: *Iris*, Vincent van Gogh, 1890.
See page 14 for a webinar, "Writing the Garden,"
about how gardeners have captured beauty
over time. Photo: The Metropolitan Museum of Art

Catalog Design: Kat Nemeč | studiokat

